

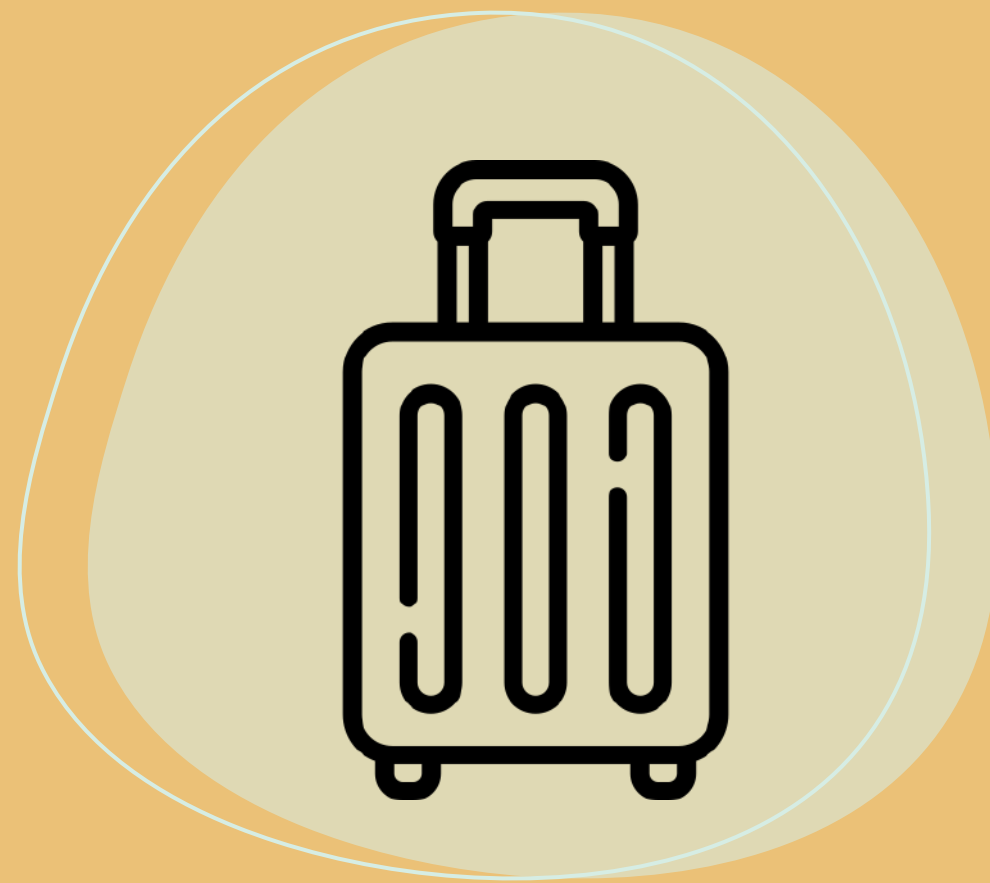


# Welcome to DéfiPlanet' !

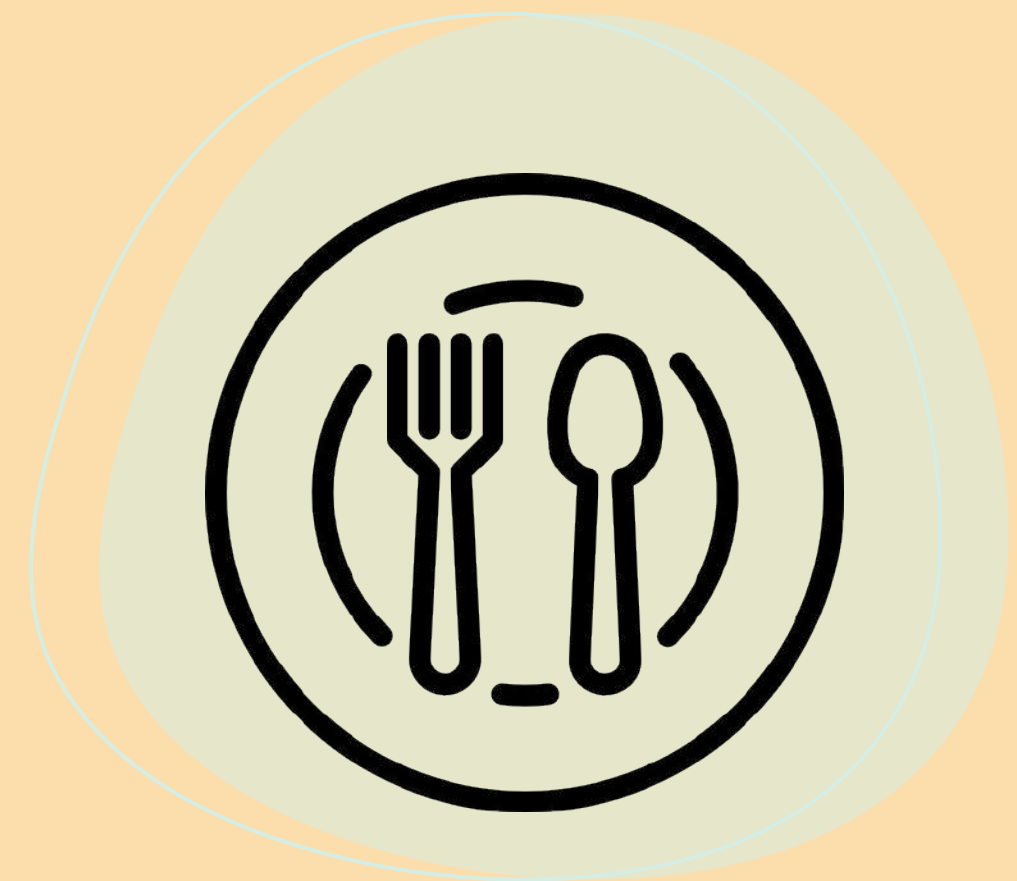
Click to learn more about our  
accommodations



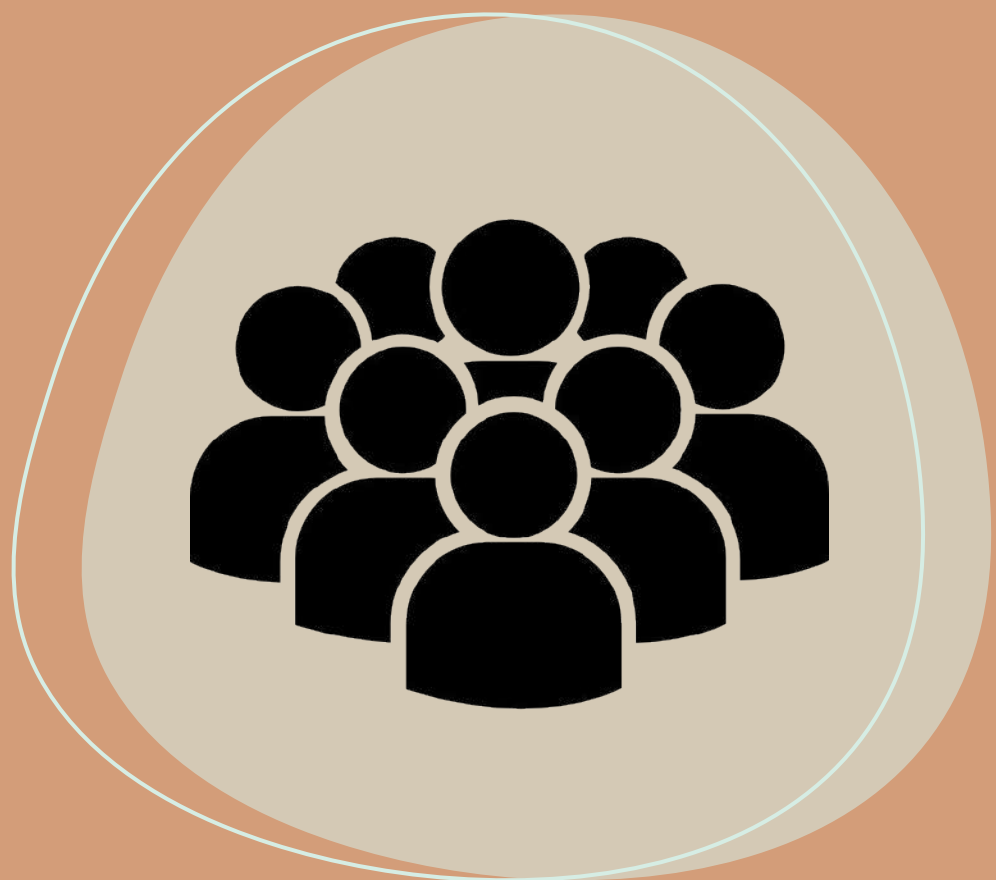
**Accommodations**



**Your stay form  
A to Z**



**Restoration**



**Your events**



**Addresses and  
region**



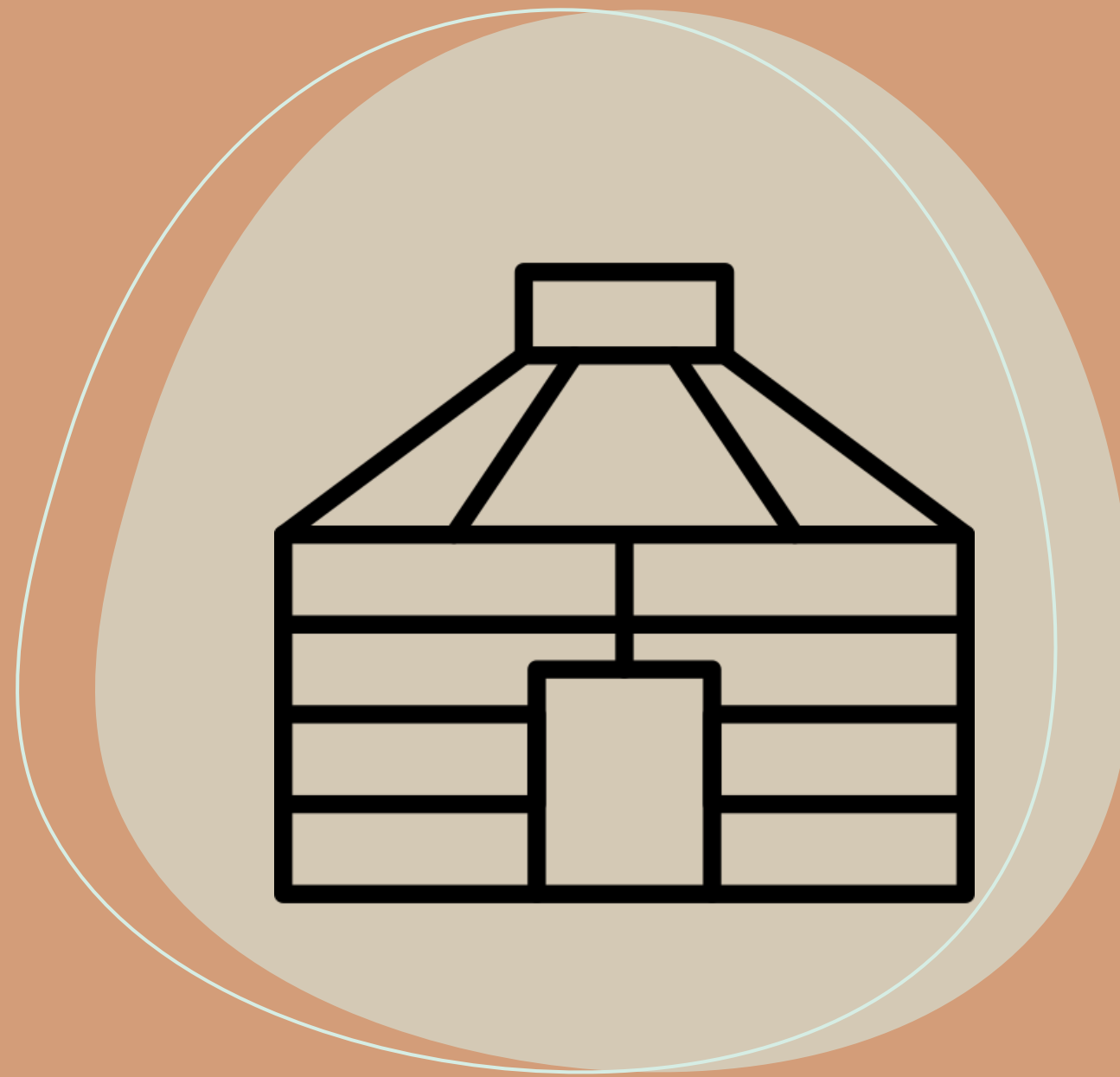
**Activities**

**Welcome !**





**Unusual**



**Traditional**



**Hotel**

# The accommodations





**In Height**



**In the ground**

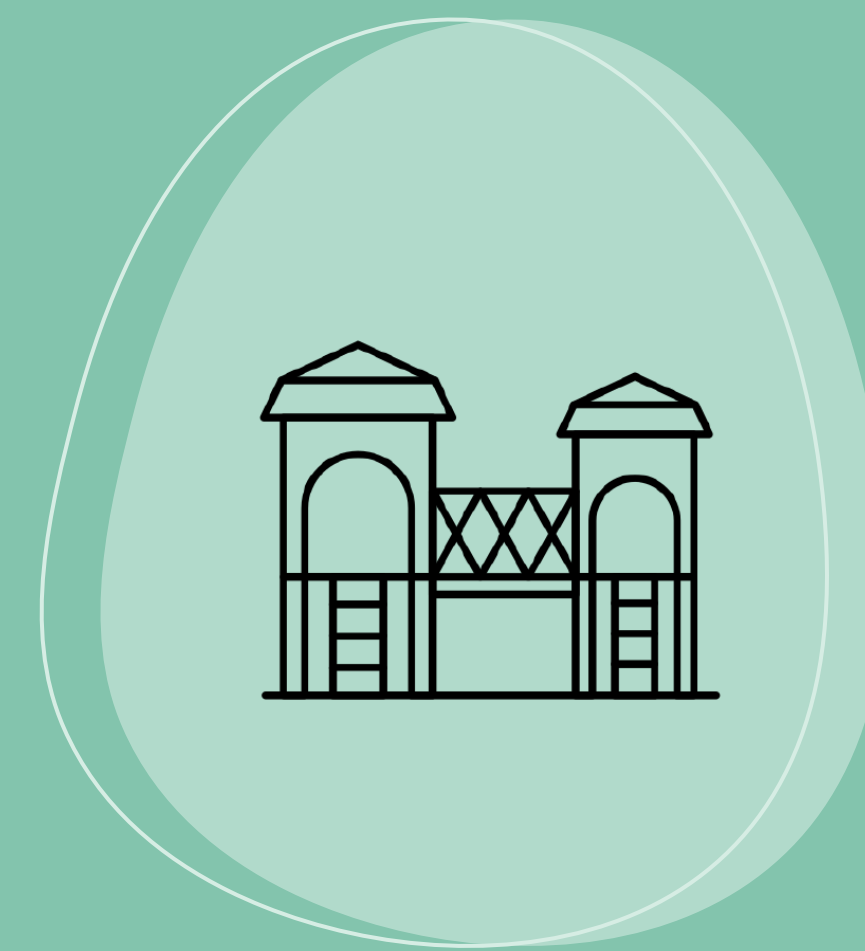
**Unusual**



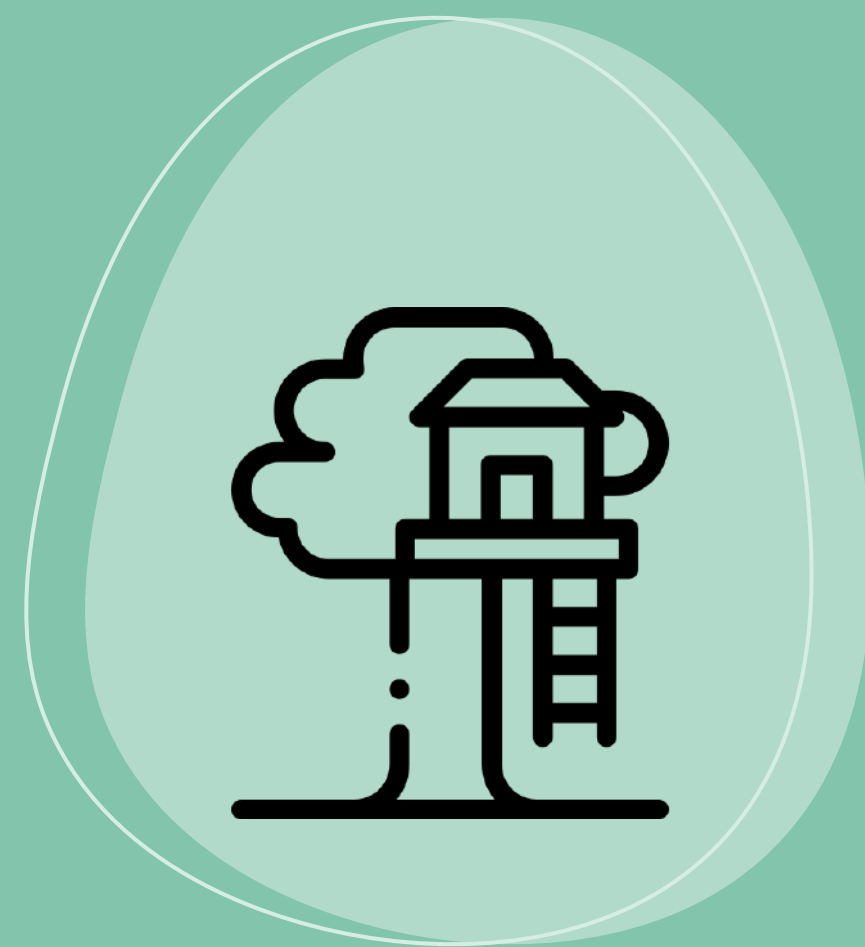




**Mansions in the trees**



**The castle in the branches**



**Houses in the branches**



**The tree huts**

**En hauteur**







## Mansions in the trees

Mansions in the trees can accommodate up to 10 people. The terrace, equipped with a spa, will allow the lords staying there to contemplate the beautiful magical forest and perhaps catch a glimpse of some goblins.

- 4 bedrooms (1 with 2 bunk beds, 1 with 2 sets of bunk beds, 1 with 2 single beds, and 1 with a double bed).
- A fully equipped kitchen.
- Two bathrooms (each with a shower, sink, and toilet).





## Castle in the branches



The treehouse can accommodate up to 10 people and will offer you a unique stay in the heart of the site. From its terrace, you can enjoy delicious meals with family or friends while taking in the stunning view overlooking the estate.

- You will find 4 bedrooms (2 with double beds, 1 with 2 sets of bunk beds, and 1 with 2 single beds).
- A fully equipped kitchen.
- Two bathrooms, each with a shower, sink, and toilet.



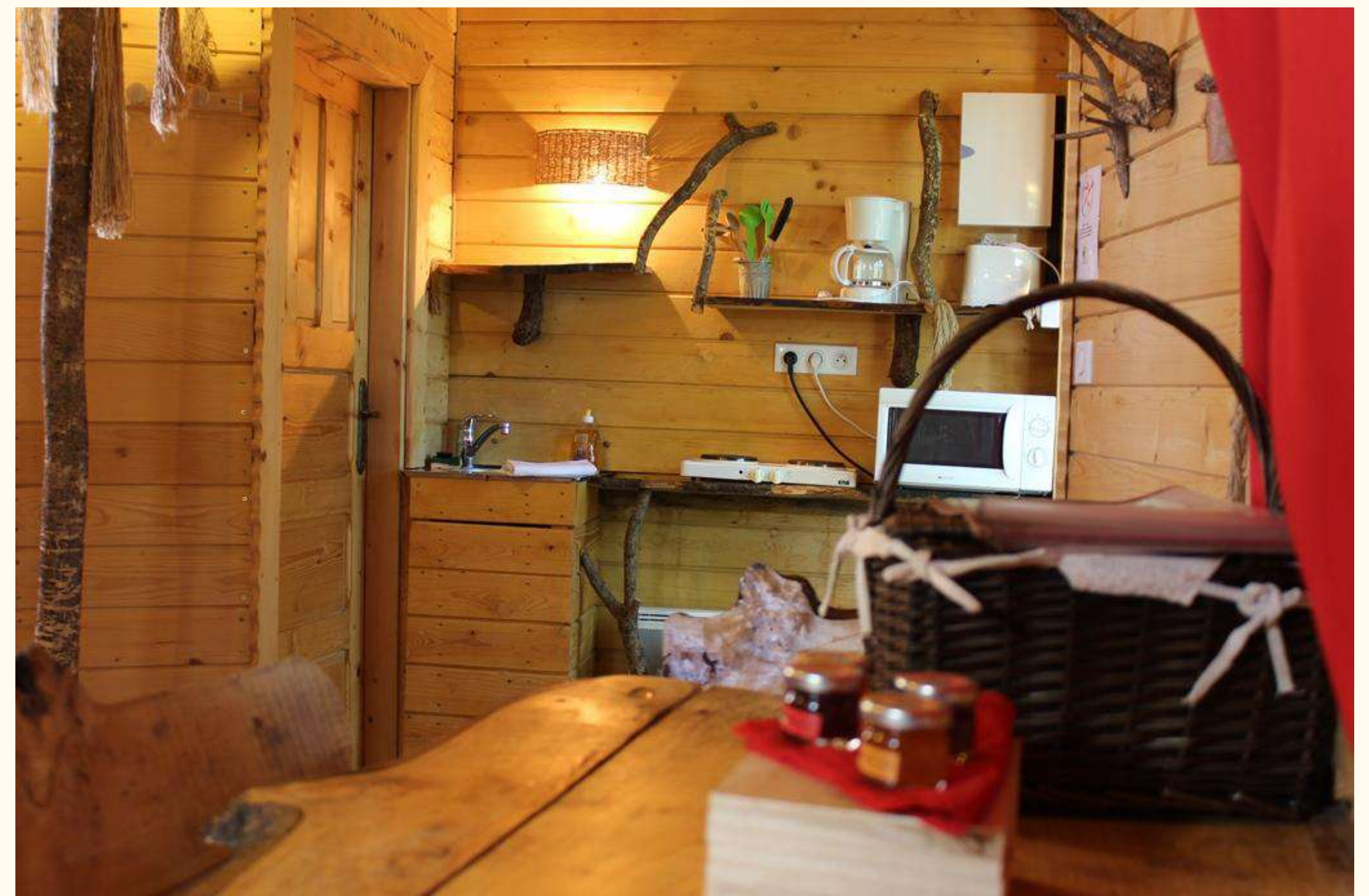


## Treehouses



**The Treehouses can accommodate 2 to 6 people. They are nestled about 8 meters high and are accessible to everyone via a staircase**

*Please note that all our houses feature a bathroom and a fully equipped kitchen.*





## The tree huts



**The Tree huts can accommodate 2 to 4 people. Nestled about 8 meters high, they are accessible to everyone via a staircase or a rope bridge.**

*Please note that the cabins do not have running water and feature dry toilets, with showers located nearby, making them even more unique. They are equipped with electricity, a microwave, and a small refrigerator.*







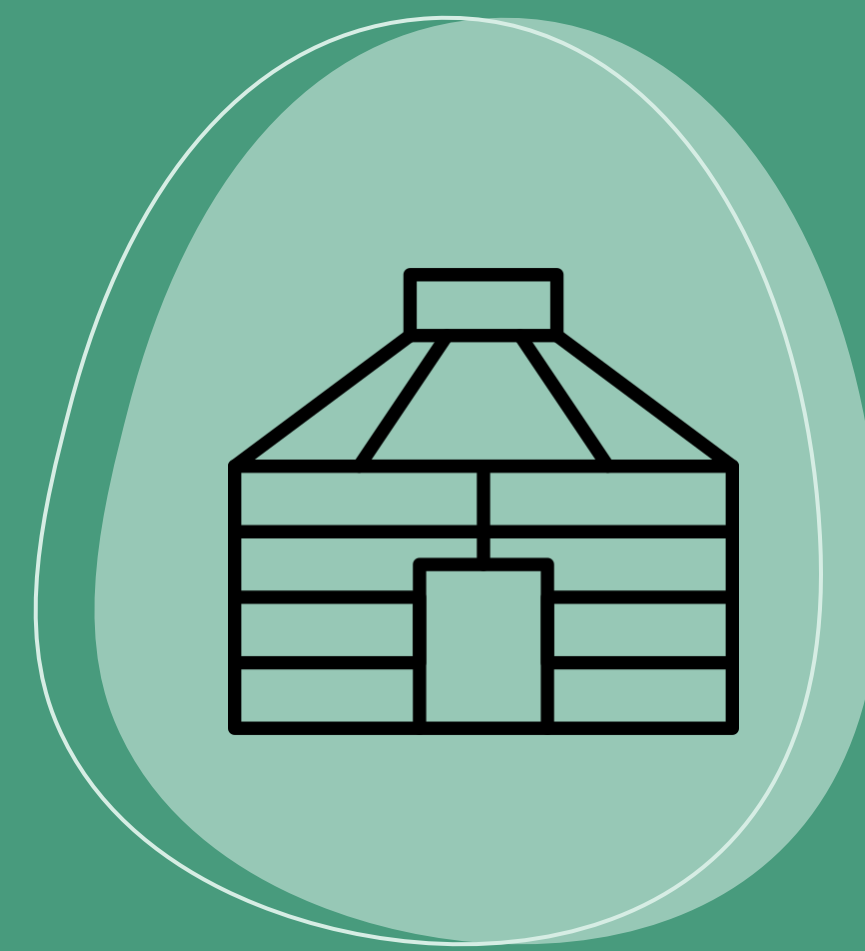
The houses of elves



The gipsy Caravan



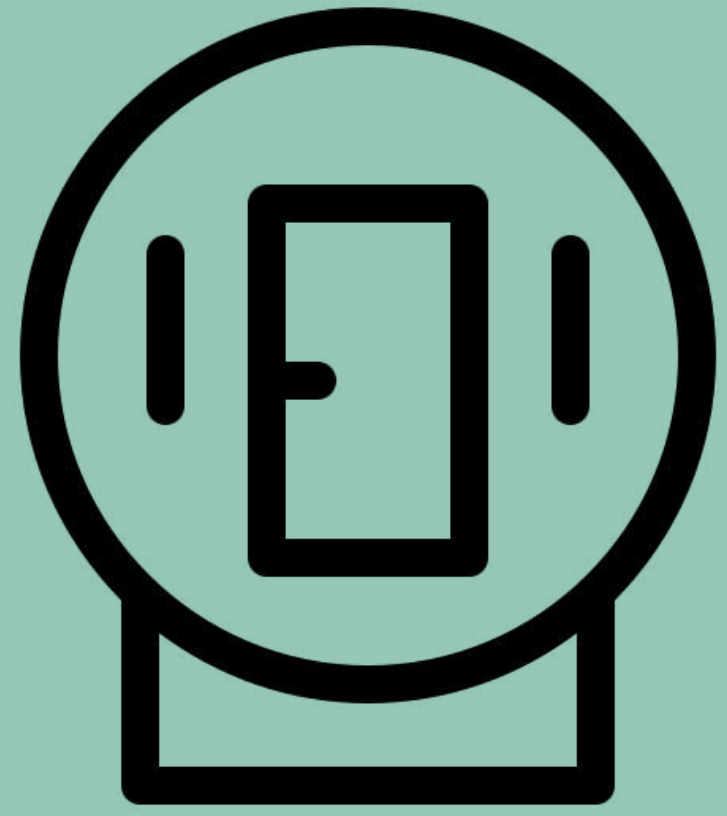
Yurts Isba



Mongolian Yurts

Au sol





**Krapahuttes**



**Animals**



**The star square**

**On ground**





## The houses of elves



Discover the magical spirit of the elves with maximum comfort :

- Houses for 8 people
- 3 bedrooms (2 with double beds and 1 with 2 sets of bunk beds)
- Fully equipped kitchen
- Bathrooms and sanitary facilities.

*Please note that two of the Elves houses are accessible to people with reduced mobility."*





## Gipsy caravane



Escape to the heart of the pines and oaks and discover this unique type of accommodation.

- Capacity for 4 and 5 people
- 1 double bed + 2 single beds
- Fully equipped kitchen
- Bathroom + sanitary facilities.

*All the caravans also have a terrace with a garden lounge.  
The 5-person caravans are equipped with a trundle bed.*





## Isba yurts



Redesigned by our elves, the Isba yurts are furnished to provide you with all the comfort of a unique and charming accommodation.

- Capacity for 6 people
- Bathroom
- Fully equipped kitchen.

*Please note that one of the Isba yurts is accessible for people with reduced mobility.*





## The Mongolian yurts



- Let yourself be carried away and transported for the duration of a stay in the high plateaus of Mongolia.
- Mongolian yurts for 2-4 people
  - 1 single bed + 2 double beds
  - Mongolian yurts for 7 people
  - 7 single beds (Ideal for groups).

*Please note that these accommodations are equipped with a small refrigerator, a microwave, a coffee maker, breakfast dishes, and air conditioning. However, they do not have running water, but the sanitary facilities are located nearby*





## The Krapahuttes



It's the perfect place to gather and share memorable moments together.

- **Krapahuttes for 7 people**
- **3 bunk beds + 1 single bed**
- **Krapahuttes for 8 people**
- **4 bunk beds.**

The Krapahuttes do not have running water, but a sanitary block is located right next to them. A room for breakfast is also available for your use.

The Krapahuttes for 7 people are accessible to people with reduced mobility.







## The Animal Houses

Located in the heart of the DéfiPlanet' meadow, the mushroom, the snail, the chicken with its real chicken coop, and the rabbit with its hutch at the back will make your stay truly unique.

- Capacité de 6 personnes
  - 1 trundle bed in the living room
  - 1 bedroom with 1 double bed
  - 1 bedroom with 2 single beds

*The Animal Houses all feature a fully equipped kitchen as well as a bathroom with a sink, shower, and toilet.*





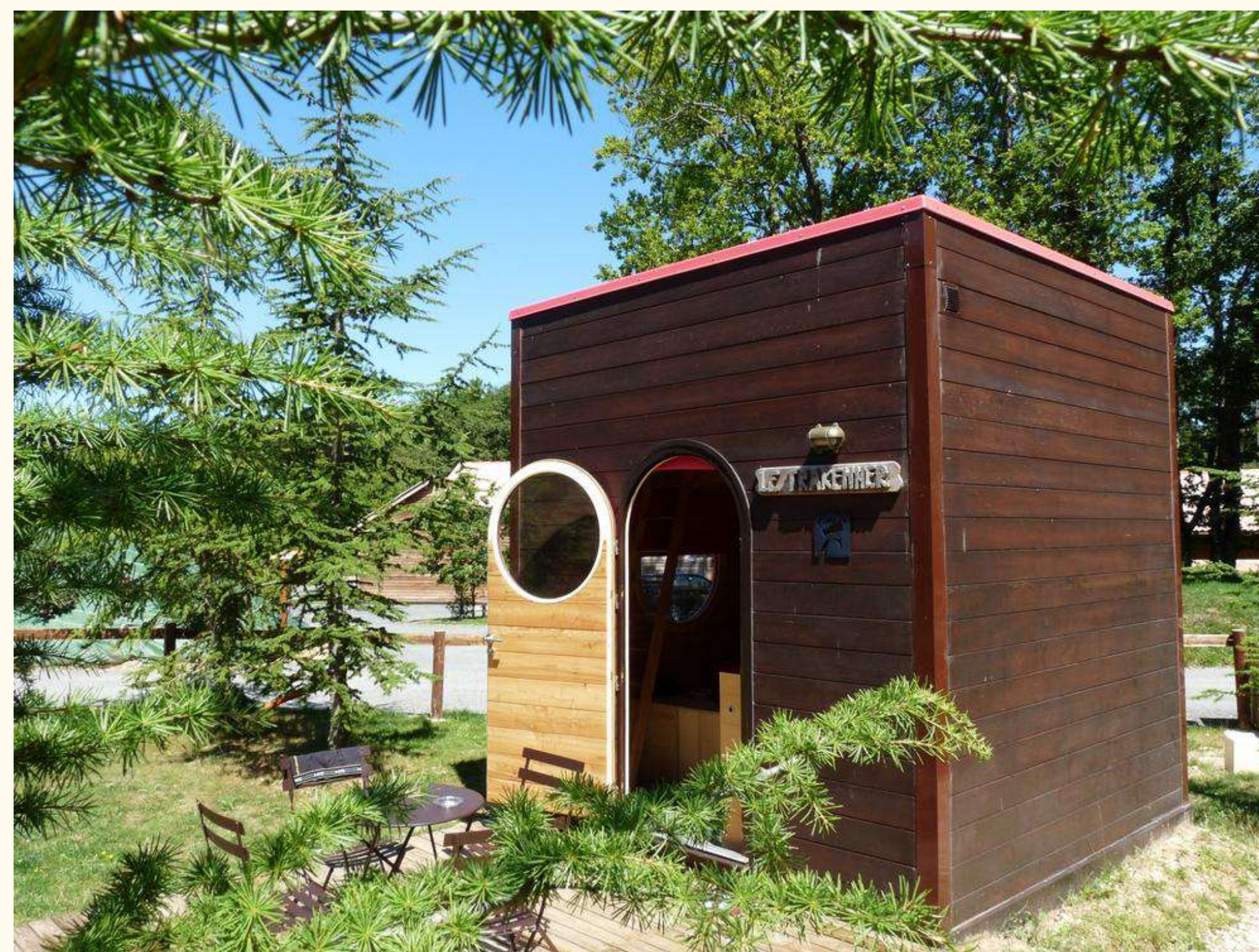
## The Star Square



"It is a cube with bold architecture, offering a very original way to sleep under the stars while staying in a very cozy interior.

- Maximum capacity: 2 people
- 1 mezzanine bed
- 1 sofa bed
- 1 fully equipped kitchenette

*The Star Square also features a shower cabin and separate toilets.*



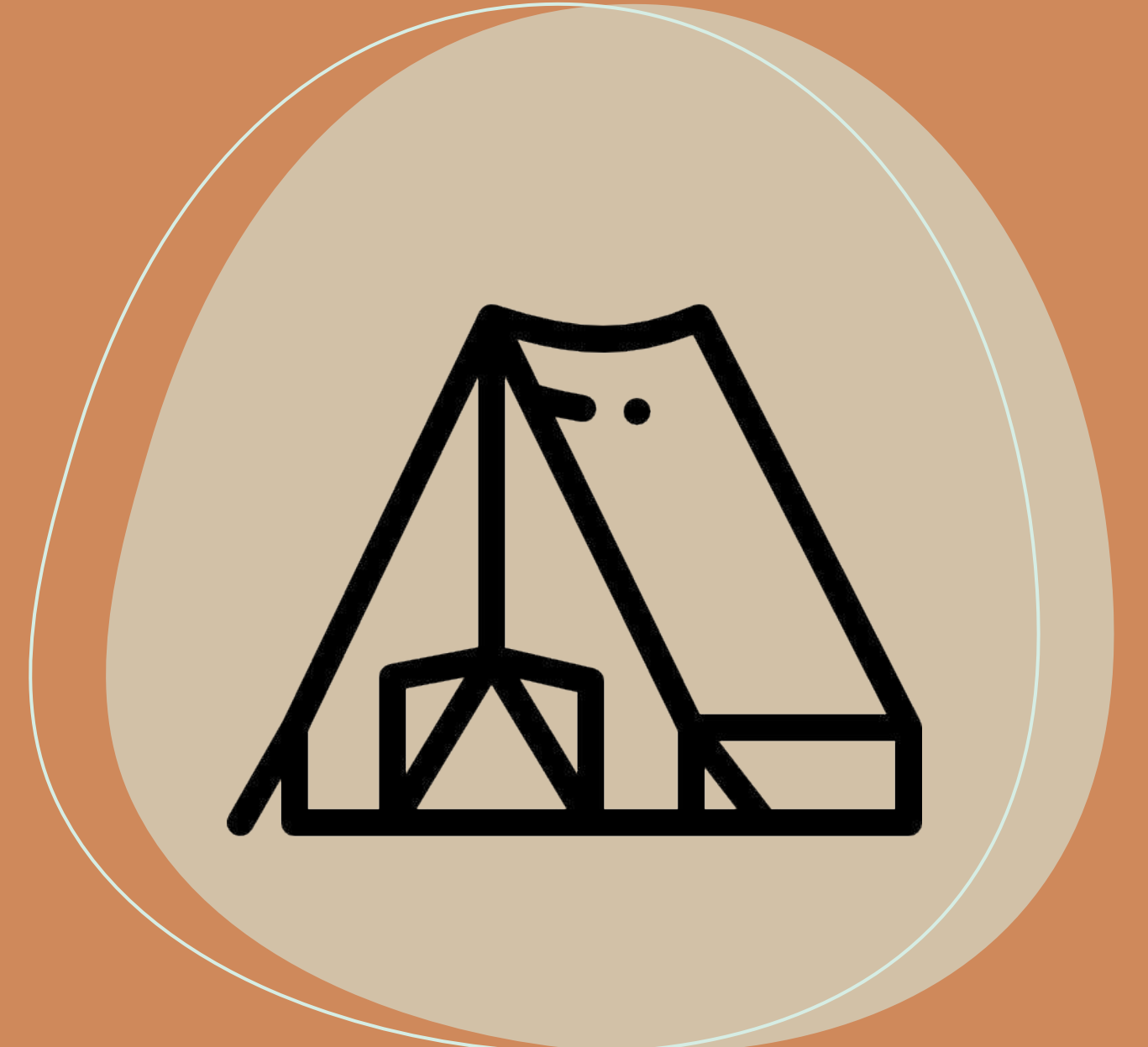




**Chalets**



**Cottages**



**Campsite**

**Traditional**





## The Chalets



Very spacious, our chalets offer you a truly successful family stay.

- Chalet for 4 people
  - 1 bedroom with a double bed
  - 1 bedroom with 2 single beds
- Chalet for 8 people
  - 1 bedroom with a double bed
  - 1 bedroom with 2 single beds
  - 1 bedroom with a bunk bed + pull-out sofa

*The chalets are equipped with a large living room, a fully equipped kitchen, toilets, a bathroom for the smaller chalets, and two bathrooms for the larger ones, as well as a TV.*





## The Cottages



Located away from the other accommodations, they guarantee a peaceful stay, making them ideal for large families or groups.

- 2 Cottages for 8 people
  - 2 bedrooms: 1 double bed, 2 single beds, and 1 sofa bed
- 1 Cottage for 12 people
  - 4 bedrooms: 4 single beds, 2 double beds, 2 sofa beds

*1 living room with a television, 1 fully equipped kitchen, bathroom, and toilets.*

*The cottages also feature a private, enclosed yard with a plancha, swing, and garden table.*







## Campsite Plots

The campsite welcomes you with tents, caravans, or motorhomes on large, well-maintained pitches, clearly marked by hedges.

- 12 standard plots  
Capacity: 8 people  
2 Premium pitches  
Capacity: 8 people  
Picnic table  
1 garden shed with a parasol, refrigerator, and 2 sun loungers
- *Note that some locations have a concrete slab to park motorhomes and caravans safely*





## Hotel



Set in the heart of the pine forest and fully wood-clad, this Unique Hotel offers a different experience at DéfiPlanet'.

- 6 pavilions with 4 rooms each.
- The room capacity ranges from 2 to 6 people.
- Each room has 1 bathroom and 1 TV.

*Each hotel has a central room with a refrigerator for breakfast.  
Note: 2 rooms are accessible for people with reduced mobility.*







**Internal Rules**



**Your stay**

**Your stay from A to Z.**





## ACCESS

Access to the accommodations and aquatic areas is strictly reserved for residents. With the authorization of a DéfiPlanet' manager, visitors are allowed into the accommodations under the responsibility of the residents hosting them. They do not have access to the aquatic areas.

## PETS

Pets are welcome on the site, but they are not allowed everywhere. Out of respect, it is imperative to:

- Keep pets on a leash,
- Pick up after them,
- Not allow them on the beds or sofas in your accommodation,
- Not bring them into the pool, hotel, theme park, equestrian center, or restaurant.

## CANCELLATION OF ACTIVITIES

Under no circumstances can DéfiPlanet' be held responsible:

- for the cancellation of outdoor activities due to weather conditions or the illness of the instructor.
- for technical failure if it is proven that the equipment is properly maintained.

## PLAYGROUNDS

Compliant with safety standards, the playgrounds are not supervised and are the responsibility of parents or guardians. Please ensure that your children adhere to the age limits indicated on the equipment. It is strictly forbidden to use the playgrounds at night. Access to the adventure course is prohibited without the supervision of an instructor.

## NOISE

Guests are asked to respect the peace and quiet of other residents and avoid loud music, television, or other noises. In this spirit, starting at 10:30 PM:

- 'Noisy games' will be stopped,
- 'Sound devices' (radios, TVs, video games, etc.) will be adjusted accordingly,
- Parents or guardians will be responsible for any noise caused by their children.

## SECURITY DEPOSIT

A security deposit was requested during your booking. This deposit is intended to cover any potential damages that may occur during your stay. If you paid by check, it will be refunded to you within a maximum of 10 days after your departure. In the case of payment by credit card, the card details will be destroyed after your departure in accordance with current regulations

# Internal Rules





## DEPARTURE PROCEDURES

On the day of departure, your accommodation must be vacated before 11 AM. If you have not selected the final cleaning option, we ask that you clean your accommodation, wash the dishes, dispose of your waste in the large bins outside the accommodations, and remove the sheets (without removing the mattress protectors). If you have chosen the cleaning option, you are only required to remove the sheets, wash the dishes, and take out the trash.

## ANIMALS ENCLOSURE

For the safety of your children and the well-being of the animals, it is forbidden to enter their enclosure, feed them, or scare them.

## PONDS

Swimming in the ponds is strictly prohibited.

## ENVIRONMENT

Convinced that you will appreciate the quality of the environment, we ask you to actively participate in its preservation through simple actions: sorting your waste, conserving water and energy, and avoiding unnecessary car trips within DéfiPlanet'. Several bins, containers, and compost stations are available throughout the property.

## DAMAGES

The equipment and facilities on the site must be used according to their intended purpose. Any damage to the premises, loss, or destruction of furnishings fully engages the responsibility of the resident, whether caused by those staying with them or by their visitors.

## GENERAL HARMONY

To preserve the general harmony of the site, the following are prohibited:

- Setting up play tents, umbrellas, or shelters that are not part of the inventory.
- Placing small inflatable pools on the terraces and lawns of the accommodations.

## INVENTORY / CLEANING

An inventory of your accommodation was carried out before your arrival. We ask that you report any missing items or damage upon arrival, as well as any issues you may notice during your stay. Decorative items are listed in the inventory, and any missing items will be charged to you with a minimum fee of €70. Some of these items are available for sale in the shop. Complaints regarding cleaning that are not reported on the day of your arrival cannot be taken into account. Any broken dishware during your stay will be charged to you, please contact reception for replacements.

# Internal Rules





## WEATHER: WEATHER WARNING

In case of an weather warning issued by the DéfiPlanet' Management, you must, at the first gusts of wind, go to:

- The relaxation lounge for guests in cabins (CA01 to CA08) and the campsite.
- In front of the reception (Mélusine room) for the castle, manors, and tree houses.

## FIRE HAZARDS

Open fires are strictly prohibited. In case of fire, notify the fire department and immediately inform the Management or one of its representatives. Fire extinguishers are placed throughout the site and should be used appropriately. A first aid kit is available at the reception.

## THEFT RISKS

The customer is responsible for their belongings and must ensure their protection, as well as report the presence of any suspicious individuals.

## COMPLAINTS

All complaints regarding the conditions of the stay must be made on-site to the Management in order to allow them to find an immediate solution. Failing this, the stay will, by express agreement, be considered as having occurred under satisfactory conditions.

## PARKING

Cars must park exclusively in the designated centralized parking areas. Parking in the aisles near the accommodations is only allowed temporarily for unloading and loading luggage and groceries. It is strictly forbidden to drive on the lawns (even temporarily) to approach your accommodation. DéfiPlanet' cannot be held responsible for any damage caused to or by the vehicles of residents or visitors parked or moving around the site.

## SMOKING POLICY

Smoking is strictly prohibited in all accommodations. If a tobacco smell is detected after your departure by the housekeeping staff, the security deposit will be retained, as this requires additional cleaning.

# Internal Rules







**The Boarding  
House.**



**Useful details.**



**The shop**



**Complete your visit**

**Your stay**





**Are you going on vacation or will you be away? Would you like to make the most of the activities at DéfiPlanet'?**

Know that dogs, cats, and horses are welcome here. We provide your pet with a private space and pay special attention to ensure their stay at the Domaine is as comfortable as possible.

Practical information:

- Reservation is required
- Up-to-date vaccination record (to be provided at reception).
- Tattoo or microchip is mandatory.
- Vaccinations and deworming must be up to date.



# Pet Boarding





## PLANCHA

Three plancha kiosks are available for your use in the village. We ask that you leave these areas clean. Wood and charcoal barbecues are prohibited. You can purchase takeaway grilled dishes prepared by the restaurant.

## CHANGEMENT DE DRAPS

For guests staying for more than a week, clean sheets will be placed in your accommodation at the end of each week. Please leave the dirty ones on the floor so they can be collected the following day.

## MAIL AND MESSAGES

You can drop your mail in the designated mailbox at reception, and it will be sent to the postal services every weekday at noon.

## TROUBLESHOOTING AND TECHNICAL ISSUES

For guests staying more than one week, clean sheets will be placed in your accommodation at the end of each week. Please leave the dirty ones on the floor so they can be collected the following day.

## EXPENSES ON SITE

Accepted payment methods: credit cards, checks, cash, Chèques-Vacances, Kadéos vouchers, Upcadhoc vouchers, and Restaurant Vouchers at the Snack or restaurant.

## DEHUMIDIFIER

You can switch the device in yourts and gipsy cabanes if they're too loud during night

## ENVIRONMENT

For environmental reasons, DéfiPlanet' has chosen not to install air conditioning in its accommodations or hotel rooms. For your comfort and well-being, remember to close the curtains before leaving your accommodation.

## EXCURSIONS

To organize your excursions, documentation is available at the main reception of DéfiPlanet', along with tickets for certain leisure sites.

## RECEPTION

Reception opening hours: Monday to Sunday from 9 AM to 7 PM, and from 9 AM to 8 PM during the summer season.

# Useful details





## ENTRY GATE

The entry gate is closed after the restaurant closes. Be sure to take the access code, which is provided on your accommodation key. To exit, press the button on the left side of the gate.

## INSECTS IN THE COUNTRYSIDE

Flies, mosquitoes, ants, and other insects are part of our countryside but can sometimes be overwhelming. Please feel free to let us know if you encounter any issues.

## TOWELS

Towels are not provided in the accommodations, except for the castle, manors, hotel, and cottages. You can rent them at the reception in sets of 2 towels.

## FINAL CLEANING

If you do not wish to do the final cleaning yourself, we can take care of it for you, as an optional service. Please inform reception at least 48 hours before your departure. This service is subject to an additional fee.

## WIFI

Accessible free of charge. You will find the connection procedure at the end of this document.

## RECYCLING

Selective recycling bins are available throughout DéfiPlanet'. Yellow bins are placed outside each accommodation to transport recyclable packaging to the collection points. The bins must remain inside the accommodations after your departure, as they are part of the inventory and will be charged in case of theft. A compost bin for your food waste is located in the parking area of the Nomad Village and the Oak Village.

## CLOTHES DRYER

To maintain the general harmony of the site, we ask that you do not hang your laundry on clotheslines outside your accommodation, but instead use the dryers provided for this purpose within the accommodations.

## DISHWARE

To do your dishes, taps are located at the foot of each cabin. You can also use the sanitary facilities located in the Nomad Village, or the sink behind the swimming pool building.

## SMOKING AREA

13 smoking areas are scattered throughout the site to prevent the risk of fire. They are marked on the accommodation map and within the domain by a large 'F'.

# Useful details







**Open from 9 AM to 7 PM (8 PM during high season), 7 days a week.**

Find essential products to make your stay easier, including food, drinks, ice creams, and bread delivery. A wide selection of products from local suppliers will allow you to discover our region. Also, come explore our souvenir and gift sections, which will delight both young and old.



# The Shop





Profitez d'un tarif préférentiel  
pour visiter 4 parcs avec le

# PASS 4 PARCS

**27€**  
ENFANT  
3 à 12 ans inclus

**48€**  
ADULTE

Les billets sont valables **2 ans**  
à partir de la date d'achat.

**VOS DESTINATIONS NATURE**  
PARCS • Hébergements • Événements

**LA VALLÉE DES SINGES**  
la-vallee-des-singes.fr

**DÉFIPLANET'**  
defiplanet.com

**LE PARC DE LA BELLE**  
parcdelabelle.com

**LE CORMENIER**  
lecormenier.com

**MISSION AREKA**  
by DéfiPlanet'

**LE NOUVEAU PARC D'AVENTURES**

**450 PRIMATES SANS CAGE NI BARRIÈRE**

**La vallée des singes**

Le pass 4 parcs est disponible  
à l'accueil de chaque parc et sur  
[vos-destinations-nature.com](https://vos-destinations-nature.com)

**VOS DESTINATIONS NATURE**  
PARCS • Hébergements • Événements

**Quatre sorties nature  
à deux pas de chez vous !**

**Le Cormenier**

**VOYAGE DANS LE TEMPS**

**RETOUR AUX SOURCES**

**LE PARC DE la Belle**

geniusico - Credits photos © S. Laval - Lips photographies - Geniusandco/StudioLudo - Ne pas jeter sur la voie publique.

Complete your visit





[vos-destinations-nature.com](https://vos-destinations-nature.com)



Fun Forest is a park specializing in treetop adventure courses, with different levels of progressive difficulty. Both young and old can come and conquer the treetops in tune with nature.

**Located 25 minutes from DéfiPlanet'.**  
Special prices available at the DéfiPlanet' reception

# Complete your visit

Nestled in the heart of nature, Aven'Thuré offers treetop adventure courses with progressive difficulty. Whether with family, friends, or solo, everyone can experience a moment full of emotions.

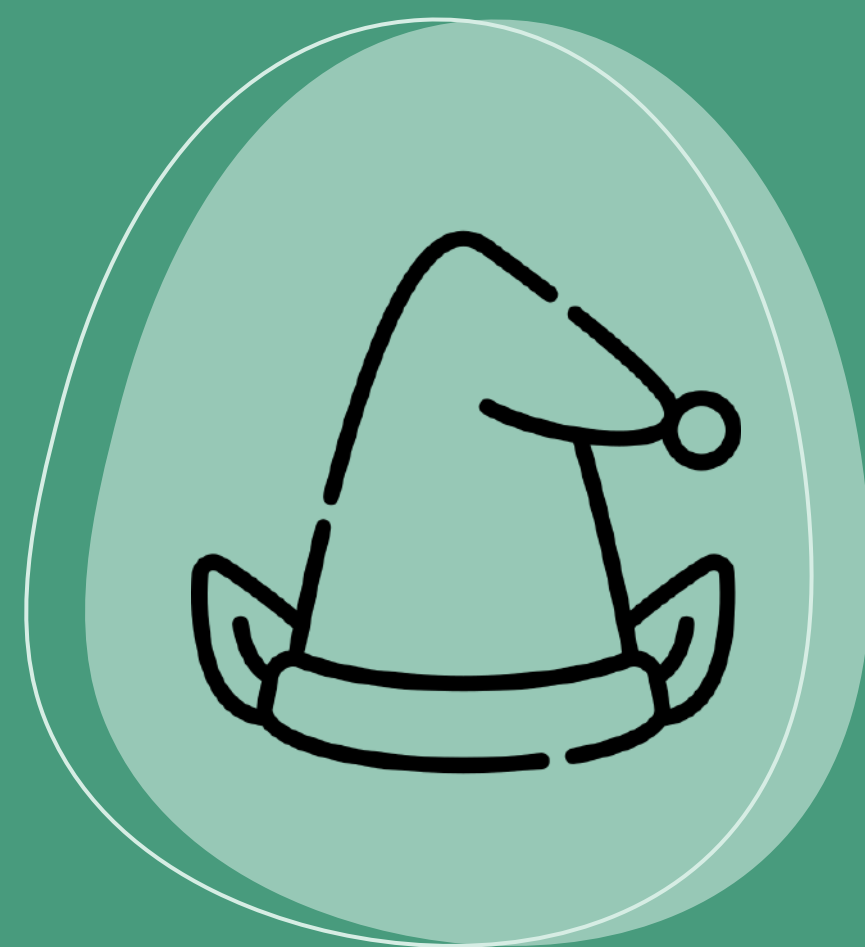
**Located 55 minutes from DéfiPlanet'**  
Special prices available at the DéfiPlanet' reception.'



[vos-destinations-nature.com](https://vos-destinations-nature.com)







Le chaudron du Farfadets



La Plancha des Farfadets

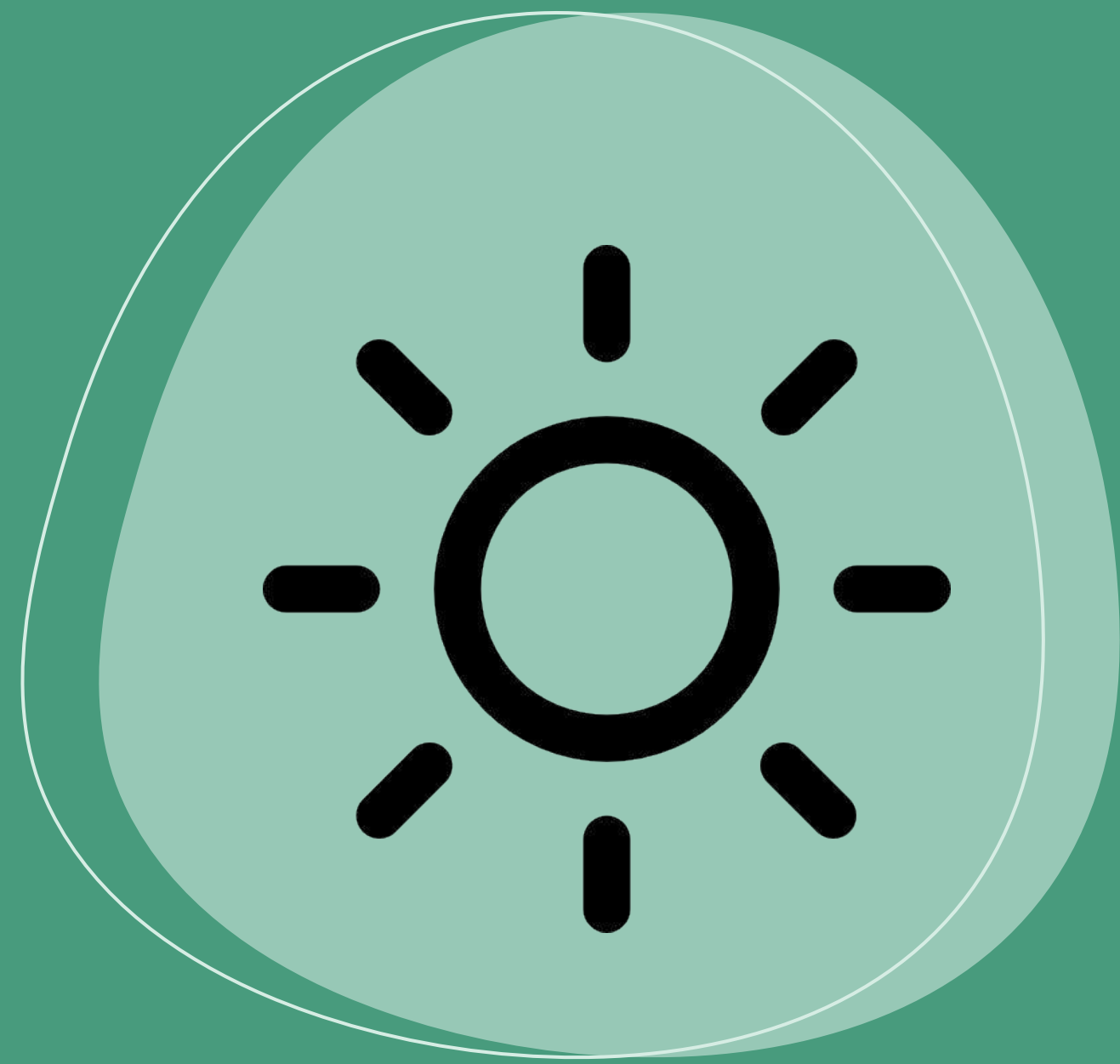


Break feast



Snack





**Lunch menu**



**Dinner menu**



**Take away**

**Le Chaudron du Farfadets**





**A lunch at our restaurant to complete your stay?  
Immerse yourself in the magical world of Le  
Chaudron des Farfadets! *Open from 12 PM to 2 PM***

- Open daily from 15/02 to 02/03; from 05/04 to 04/05;  
from 18/10 to 02/11
- .
- Open on Saturdays and Sundays from 08/03 to 30/03;  
from 06/09 to 12/10.
- Open on Sundays from 16/11 to 04/01.
- Open on weekends during long weekends from 01/05 to  
04/05 / 08/11 to 11/11.

The reception team is ready to take your reservation!

**Reservation strongly recommended: book smart!**



**[Check out the menu!](#)**

**Lunch Option**





**A dinner at our restaurant to complete your stay?  
Immerse yourself in the magical world of Le  
Chaudron des Farfadets!** *Open from 7 PM to 9 PM.*  
*Please note that the bar opens at 5 PM.*

- Open every evening from 07/02 to 09/02, from 04/04 to 06/09, from 17/10 to 01/11, and from 22/12 to 03/01 (except on 24/12 with a meal tray option and on 31/12 with a special New Year's Eve menu).
- Open on Friday and Saturday from 14/02 to 29/02, from 03/10 to 11/10, and from 14/11 to 20/12.
- Open Monday to Saturday from 08/09 to 27/09.
- Open from 07/11 to 10/11.

The reception team is ready to take your reservation!

**Reservation strongly recommended: book smart!**



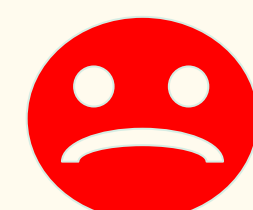
**[Check out the menu!](#)**



7pm - Little or no crowd



7:30 pm- Average crowd



8pm - 8:30pm - High crowd



9pm- Little or no crowd

# Evening Option



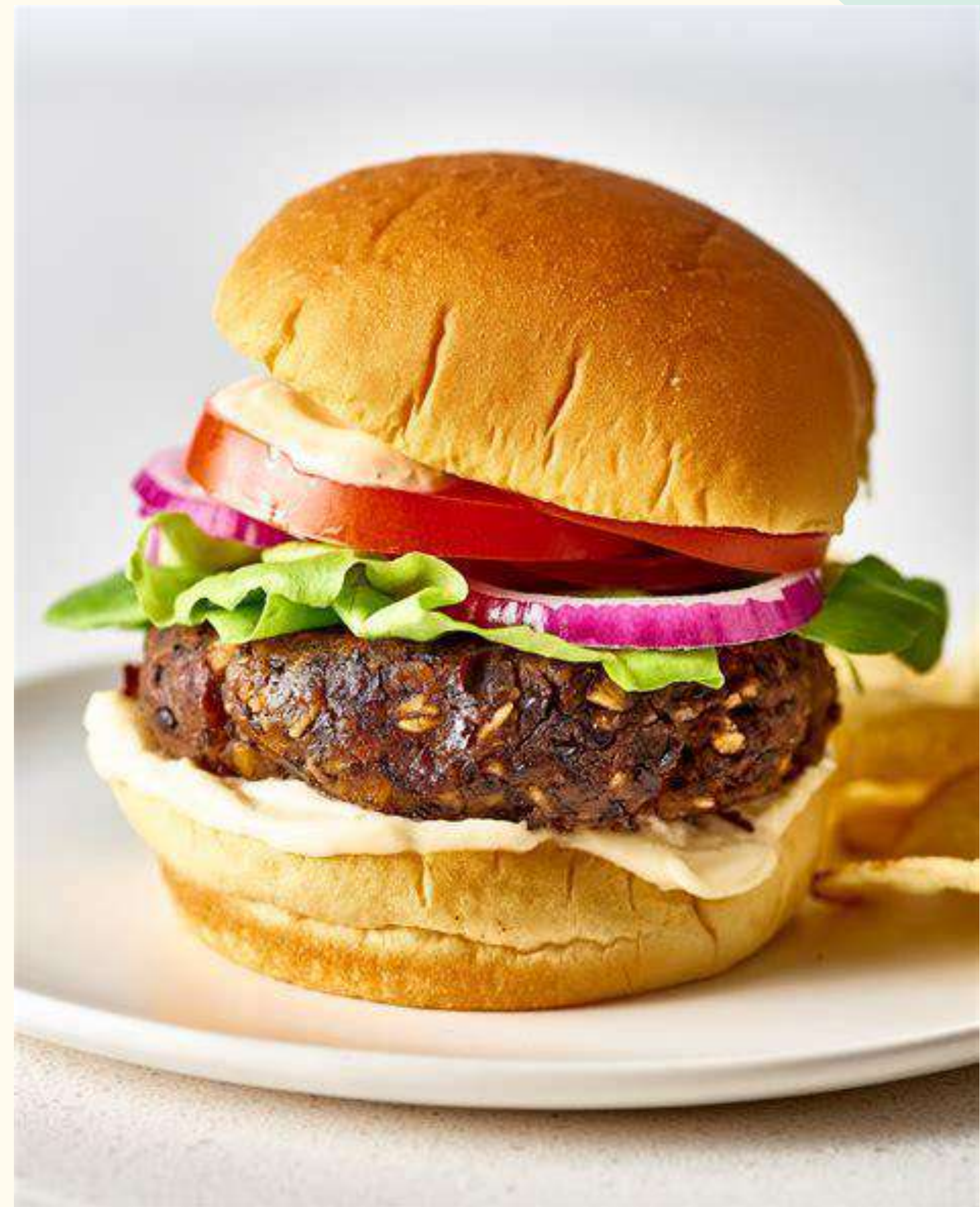


**The perfect blend of staying in your accommodation without cooking, takeout is what you need.**

With a wide selection on the menu, including salads, pizzas, fresh pasta, main dishes, and desserts, not to mention drinks!

Remember to order between **5:00 PM** and **6:30 PM** at 05.49.45.97.60 to pick up your order between **7:00 PM** and **8:00 PM**, with payment made directly at the restaurant. Don't forget to bring your own bag.

- Open every evening from 07/02 to 09/02, from 04/04 to 06/09, from 17/10 to 01/11, and from 22/12 to 03/01 (except on 24/12 with a meal tray option and on 31/12 with a special New Year's Eve menu).
- Open on Fridays and Saturdays from 14/02 to 29/02, from 03/10 to 11/10, and from 14/11 to 20/12.
- Open from Monday to Saturday from 08/09 to 27/09.
- Open from 07/11 to 10/11.



**[Check out the menu!](#)**

**Take away**





**A grilled food concept created at DéfiPlanet' to eat while having fun, with music and songs.**

It is a wooden chalet with 3 planchas set up to accommodate up to 24 people at the same time. Greeted by the little elves, you will then collect food and drinks from the various refrigerators provided for this purpose

- By reservation, the day before by 4:00 PM.
- Open during the restaurant hours of Chaudron des Farfadets - For more information, call the reception at 05 49 45 87 63 or at the front desk.



**[Check out the menu!](#)**

# La Plancha des Farfadets





Want to treat yourself? Book your breakfast served directly in your accommodation!

Stay cozy a little longer under the duvet and enjoy a breakfast at home.



- For **breakfasts**, reservation is required and must be made the day before by 4:00 PM. For tree accommodations, remember to hang your basket at the end of the rope before going to sleep. For other accommodations, pick up your breakfast in the breakfast box in front of your accommodation when you wake up. Baskets are available for purchase at the shop.
- It is also possible to order **bread and pastries**, which will be delivered to your accommodation every morning. Orders must be placed each day before 6:00 PM at the reception.

[Check out the breakfast](#)

# Our breakfast





**A lunch at our restaurant to complete your stay? Dive into the magical world of the Chaudron des Farfadets! Open from 12:00 PM to 2:00 PM.**

- Open every day from 15/02 to 02/03; from 05/04 to 04/05; from 18/10 to 02/11.
- Open on Saturdays and Sundays from 08/03 to 30/03; from 06/09 to 12/10.
- Open on Sundays from 16/11 to 04/01.
- Open on long weekend holidays from 01/05 to 04/05; from 08/11 to 11/11.

The reception is ready to take your reservation!

**Reservation strongly recommended: book wisely!**



**Check out the ingredients!**

**Snack**







## Your events

### Seminars, weddings, family reunions...

As the national leader in unusual stays, DéfiPlanet' offers you the opportunity to organize a unique event that will be unforgettable. With the capacity to host 800 people for the day and 300 for overnight stays, DéfiPlanet' will surprise you with its unique rooms, unusual accommodations, original dining options, and a variety of sports and relaxation activities.

DéfiPlanet', a team ready to help you organize your event.

To help you make a lasting impression on your collaborators, we offer different flexible spaces tailored to your desires:

- The Fustes room of 250 m<sup>2</sup>
- The Arion room of 450 m<sup>2</sup>
- The Mélusine room of 148 m<sup>2</sup>
- The Chars room of 80 m<sup>2</sup>
- The Mongole room of 57 m<sup>2</sup>
- The Paddock room of 66 m<sup>2</sup>
- The Carrière room of 57 m<sup>2</sup>
- The Epona room of 800 m<sup>2</sup>







## Adresses Utiles



### Epicerie

Alimentation Gabillat Stéphanie, 14 Route de Poitiers, 86340 Fleuré, 6km, 6 min  
Horaires : 9h00-12h00 et 14h00-18h00  
Le mercredi de 9h00-14h00  
Fermé le samedi et dimanche  
Tel : 05 49 42 69 96

Coop, 86410 Verrières 6km, 8 min  
Horaires : du mardi au samedi 8h30-13h00 et 15h30-20h00.  
Dimanche 9h00-13h00  
Tel : 05 49 42 95 54

### Poste

La Poste , Place de la Poste, 86340 Fleuré 6km, 6 min  
Horaires : du mardi au vendredi 14h-16h30  
Samedi 9h00-12h00

La Poste , 2 rue de la Boussagere, 86410 Lhommaizé 6km, 7 min  
Horaires : 8h45-11h45, le samedi 9h00 - 11h45  
Fermé le dimanche et le jeudi

### Boulangerie

La Verrière des Délices, 10 place de la mairie, 86410 Verrières 6km, 8 min  
Tel : 05 49 54 46 20  
Horaires : du mardi au samedi 06h30-13h00 et 15h00-19h30  
Dimanche 6h30-12h30

Boulangerie Pâtisserie RAMBAULT, 10 place de Gomelange, 86320 CIVAUX  
Tel : 05 49 48 45 15  
Horaires : du lundi au jeudi 8h00-12h30 et 16h00-19h00  
Du vendredi au dimanche 8h00-12h30

### Station service

Total Energie, 14 rue de la Chanterie, 86340 Nieuil-l'Espoir, 10km, 15 min  
Tel : 05 49 42 64 02  
Horaires : du lundi au vendredi 07h00-18h30. Samedi 07h00-12h00

Intermarché, Lussac-les-Châteaux 16km, 20 min  
Tel : 05 49 48 32 33  
Station service 24h/24

Intermarché, Gençay 17km, 20 min  
Tel : 05 49 59 49 25  
Station service 24h/24

Gulf, 45 Rte de Lhommaize, 86410 Verrières, 8 min

### Distributeur de billets

Crédit Agricole, 8 Place de l'Eglise, 86340 Nieuil-l'Espoir, 10km, 15 min  
Tel : 05 49 36 29 39

Crédit Mutuel, 23 Route de Montmorillon, 86320 Lussac-les-Châteaux 16 km, 20 min  
Tel : 05 49 84 08 97

Caisse d'épargne, 6 place de la Liberté, 86320 Lussac-les-Châteaux 15 km, 20 min  
Tel : 05 86 71 00 02

Banque Populaire, 2 route de Civray, 86160 Gençay 17km, 20 min  
Tel : 05 49 97 16 30

Banque Postale, 16 rue du Palateau, 86160 Gençay 17km, 20 min

### Pharmacie

Pharmacie de Verrières, 11 rue de Provence, 86410 Verrières, 6km, 8 min  
Tel : 05 49 42 72 15  
Horaires : du lundi au vendredi 9h00-12h15 et 14h00-19h00 et samedi 9h00-12h00

Pharmacie Rigaud Sandrine, Espace médical de la croche, 86320 Civaux, 10km, 15 min  
Tel : 05 49 48 04 08  
Horaires : du lundi au vendredi 9h00-12h30 et 14h30-19h00, samedi 9h00-12h00

Pharmacie Dulieu, 3 Allée du Champ de Foire, 86340 Nieuil-l'Espoir, 10km, 15 min  
Tel : 05 49 42 64 07  
Horaires : du lundi au samedi 9h00-12h30 et 14h00-19h30

### Médecin

Dedieu Pascale (Cabinet Médical) 5 Rue de Provence, 86410 Verrières, 6km, 8 min  
Tel : 05 49 42 71 05

Mesrine Natacha (Cabinet Médical) 5 Rue de Provence, 86410 Verrières, 6km, 8 min  
Tel : 05 49 42 71 05

Goulet Gilles, 1 route de Chauvigny, 86340 Fleuré, 6km, 7 min  
Tel : 05 49 42 63 33

Centre Médical de Soins Immédiats (CMSI), Zone république III, 1 Rue Henri le Châtelier, 86000 Poitiers  
Tel : 05 54 07 11 82  
Horaires : du lundi au vendredi 8h00-19h00  
Samedi et dimanche 9h00-19h00

### Marchés

Marché de Lussac-les-châteaux, Place du Champs de Foire 15km, 20 min  
Vendredi 8h00-13h00

Marché de Chauvigny, Place du Marché, 20km, 20 min  
Mardi, jeudi et samedi 8h00-13h00

Marché Notre Dame à Poitiers, Place Charles de Gaulle 30 km, 30 min  
Du lundi au samedi 8h00-13h00

### Grande distribution

Lidl, Lussac-les-Châteaux 16km, 20 min  
Horaires : du lundi au samedi : 08h30-20h00

Intermarché, Lussac-les-Châteaux 16km, 20 min Tel : 05 49 48 32 33  
Horaires : du lundi au samedi 8h30-19h30 dimanche 9h00-12h00

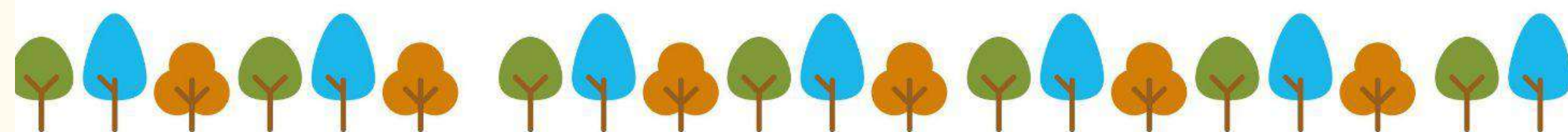
Intermarché, Gençay 17km, 20 min Tel : 05 49 59 49 25  
Horaires : du lundi au samedi 8h30-19h30 dimanche 9h00-12h30

### Bar-Tabac-Presse

Loto PMU, 8 Route de Lhommaize, 86410 Verrières 6km, 8 min  
Tel : 05 49 42 75 64  
Horaires : mardi au samedi 07h00-19h30 et dimanche 09h00-13h00

### Numéros d'urgence

15 SAMU  
17 Police Secours  
18 Sapeurs-Pompiers  
114 Numéro d'urgence pour les personnes sourdes et malentendantes (numéro accessible par fax et SMS)  
112 Numéro d'appel d'urgence Européenne



# Addresses and region







## LES RESTAURANTS AUX ALENTOURS

### LES BRASSERIES

**Pizzeria « aux défis Gourmands »**, 86410 DIENNE - 06.63.79.75.13. **A 2min.**  
Ouvert du mercredi au dimanche de 18h00 à 21h30 (sur commande). Prix moyen : 13€

**Brasserie Des Deux Palais** - 2 route de Poitiers 86340 FLEURÉ 05.49.42.60.23. **A 5min.**  
Du lundi au vendredi de 6h00 à 15h00.  
Prix moyen : 12€

**Restaurant La Boussole** - 1480 route de limoges 86550 MIGNALOUX BEAUVOIR  
05.49.46.72.80. **A 15min.**  
Ouvert du lundi au jeudi (fermé le mardi) de 9h00 à 15h00 et du vendredi au dimanche de  
18h00 à 21h00.  
Prix moyen 17€

### LES RESTAURANTS GOURMETS

**LE COMME CHEZ SOI** – 9 place de coume – 86410 VERRIERES 05.49.03.43.52. **A 8min.**  
Ouvert du mercredi au samedi de 12h00 à 13h30 et de 19h15 à 21h00.  
Prix moyen : 22€.

**LA BERGERIE** – 1, rue du Rocher – 86340 NIEUIL L'ESPOIR - 05.49.60.10.10. **A 15min.**  
Ouvert le midi, 11h30 à 13h30 et le soir, vendredi, samedi, 11h30 à 21h00.  
Fermé lundi, mercredi. Prix moyen : 33€

**LE TEMPS DES CERISES** - 10 places de Saint Sornin, 86320 LUSSAC LES CHATEAUX - 09.81.35.94.83. **A 20 min.**  
Ouvert le midi, 12h à 14h, et le soir, lundi, jeudi, vendredi et samedi, 19h à 22h.  
Fermé le dimanche. Prix moyen : 20€

**LE BATEAU IVRE** - 399 Avenue Jacques Cœur, 86000 POITIERS - 05.49.41.33.33.  
**A 20 min.** Ouvert du lundi au samedi de 10h à 22h30. Prix moyen : 25€

**LA TABLE DES ORANGERIES** - 12, avenue du Docteur Dupont - 86320 LUSSAC LES CHATEAUX - 05.49.84.07.07. **A 17 min.**  
Ouvert le soir du lundi au samedi de 19h15 à 21h00., et le midi le jeudi, vendredi et dimanche  
de 12h15 à 12h30.  
Prix moyen : 30€

**Restaurant LE LION D'OR** - 8 rue du marché 86300 CHAUVIGNY - 05.49.46.30.28.  
**A 24 min.** Ouvert tous les jours 12h00-13h30 et 19h00-20h30.  
Fermé le dimanche soir du 1er novembre au 15 avril. Prix moyen : 25€



# Addresses and region





## Une région À DÉCOUVRIR



### Activités à moins de 45 minutes de DéfiPlanet

- 1 **LE FUTUROSCOPE** (Poitiers, à environ 30 min).
- 2 **POITIERS** Ville d'art et d'histoire, vous serez particulièrement ébloui par Notre Dame la Grande, chef d'œuvre de l'art roman. La vieille ville se prête aux promenades dans les rues piétonnes.
- 3 **MONTMORILLON** La Cité de l'Écrit et des Métiers du Livre a fait de Montmorillon, ville d'art et d'histoire, un pôle d'excellence en la matière autant par son aspect accueillant. Un riche patrimoine architectural permet de compléter agréablement la visite (à environ 30 min).
- 4 **LE PARC DE LA BELLE** (Magné, à moins de 30 min).
- 5 **LA VALLÉE DES SINGES** (Romagne, à environ 40 min).
- 6 **TERRE DE DRAGONS** (Civaux, à environ 15 min).
- 6 **ABYSSEA Complexe aquatique & Bowling** (Civaux, à environ 15 min).
- 7 **LE CIRCUIT DU VIGEANT** Le circuit auto-moto homologué par la Fédération Française du Sport automobile, long de 3757 m, est l'un des plus beaux circuits de France (à environ 30 min).

- 8 **CHAUVIGNY** Ville d'art, ses cinq châteaux sont situés sur un même promontoire dominant la Vienne. En ville haute : de gigantesques murailles du château Baronial accueillent un spectacle de haut vol où évoluent des oiseaux du monde entier (**Les géants du ciel**). Berceau de la porcelaine en Poitou-Charentes, internationalement reconnue pour sa qualité. Vous trouverez également **LE VÉLO RAIL**. (à environ 30 min).
  - 9 **LE CORMENIER** (Champniers, à environ 40 min)
  - 10 **ST-SAVIN** Avec son abbaye classée au Patrimoine Mondial de L'UNESCO (à environ 40 min).
  - 11 **ANGLES-SUR-L'ANGLIN** Un des plus beaux villages de France (à environ 40 min).
- LE ROC AUX SORCIERS**

#### À MOINS DE 2 HEURES

La Rochelle / Royan  
Le Marais Poitevin  
Les Châteaux de la Loire  
La porcelaine de Limoges  
Cognac  
Le Puy du Fou

**DOCUMENTATION À L'ACCUEIL ET  
VENTE DE BILLETS À TARIF RÉDUIT  
POUR CERTAINS PARCS.**

### Activities situated at less than 45 minutes from DéfiPlanet

- 1 **LE FUTUROSCOPE** (Poitiers, about 30 mn)
- 2 **POITIERS** Town of art and History, you will be impressed by Notre Dame la Grande, a masterpiece of Romanesque art. The old town invites you to take a stroll in its pedestrian streets.
- 3 **MONTMORILLON** City of writing and book jobs but also town of art and History, Montmorillon is a center of excellence in these area as well as in its welcoming aspect. A rich architectural heritage offers a good complement to the visit.
- 4 **LE PARC DE LA BELLE** (Magné, less than 30 mn)
- 5 **LA VALLÉE DES SINGES** (Romagne, about 40 mn)
- 6 **TERRE DE DRAGONS** (Civaux, about 15 mn).
- 6 **ABYSSEA aquatic complex and bowling** (Civaux, about 15 mn).
- 7 **LE CIRCUIT DU VIGEANT / Vigeant Circuit** auto-moto circuit approved by the French federation of Automobile Sport, it is 3757meters long. It is one of the most beautiful French circuit (about 30 mn).

- 8 **CHAUVIGNY** art town with its five castles located in a same headland which offers a splendid view on the Vienne. In the upper city a gigantic baronial castle ramparts host a high-flying show with birds from all over the world (**LES GÉANTS DU CIEL - THE SKY GIANTS**). Chauvigny is the cradle of porcelain in Poitou-Charente and it is internationally recognized for its porcelain quality. (about 30mn). You will also find **LE VÉLO RAIL - THE RAIL-BIKE**.
- 9 **LE CORMENIER** (Champniers, about 40 mn)
- 10 **ST-SAVIN** with its abbey listed in the UNESCO world heritage (about 40mn)
- 11 **ANGLES-SUR-L'ANGLIN** one of the most beautiful French villages (about 40mn). **LE ROC AUX SORCIERS - WIZARDS' ROCK**.

#### AT LESS THAN 2 HOURS

La Rochelle / Royan  
Le Marais Poitevin  
Les Châteaux de la Loire - Loire Castles  
La porcelaine de Limoges - Limoges Porcelain  
Cognac  
Le Puy du Fou

**DOCUMENTATION AT YOUR DISPOSAL AT THE  
RECEPTION DESK WITH REDUCED PRICE  
TICKETS FOR SALE**

